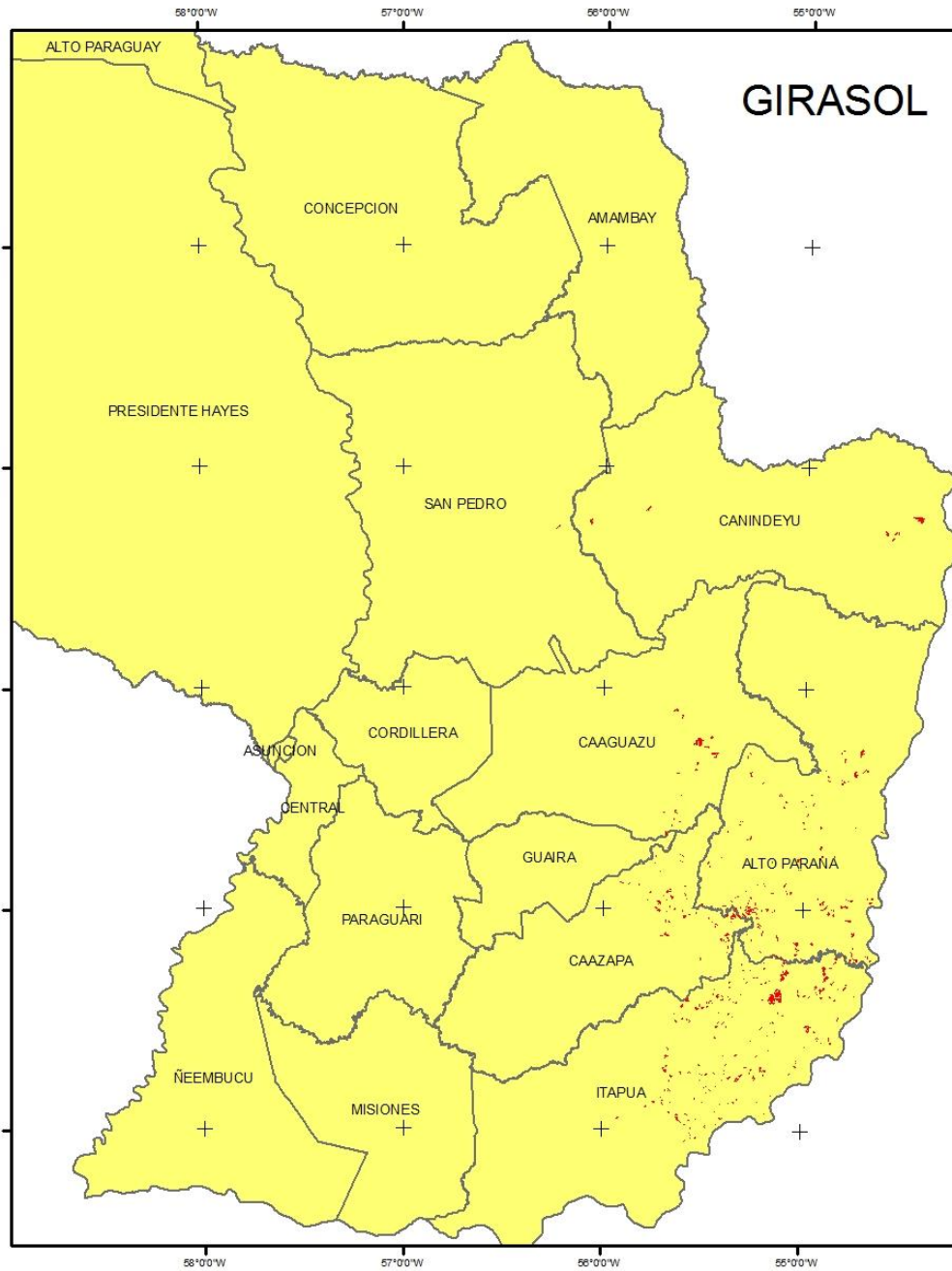


# GIRASOL

Superficies en hectáreas

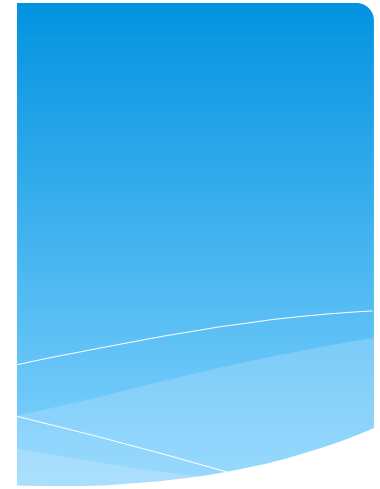
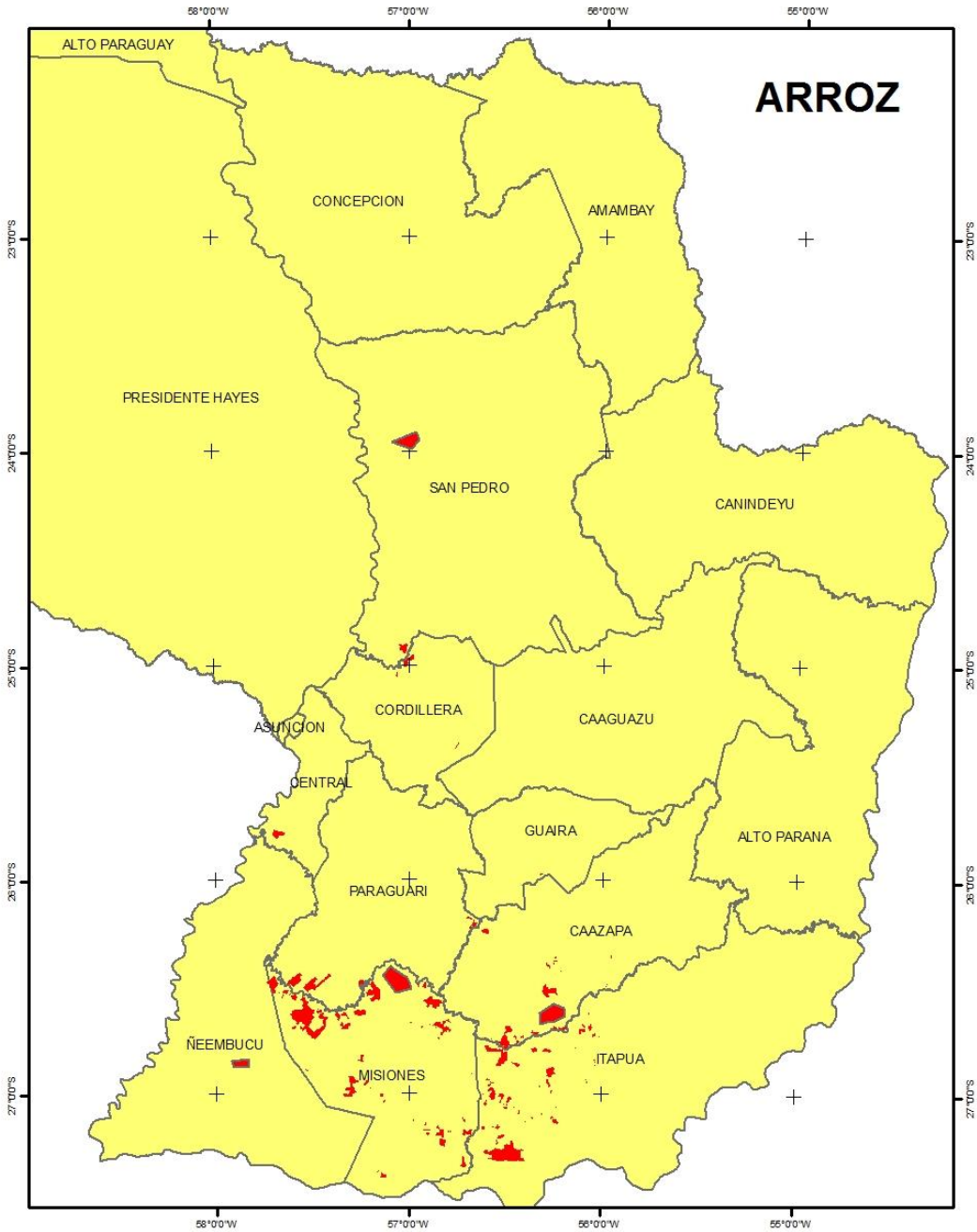
	2012/2013	2013/2014	Diferencia
Departamentos			
01 - CONCEPCION	-	-	-
02 - SAN PEDRO	1.225,62	194,13	(1.031,49)
04 - GUAIRA	-	18,36	18,36
05 - CAAGUAZU	3.808,35	3.234,42	(573,93)
06 - CAAZAPA	4.654,71	5.048,19	393,48
07 - ITAPUA	24.840,54	18.022,86	(6.817,68)
08 - MISIONES	-	-	-
10 - ALTO PARANA	16.797,51	12.345,30	(4.452,21)
14 - CANINDEYU	2.429,82	2.243,97	(185,85)
Totales	53.757	41.107,23	(12.649,32)



# ARROZ CON RIEGO

Superficies en hectáreas

	2012/2013	2013/2014	Diferencia
01 - CONCEPCION			
02 - SAN PEDRO	1.924,75	9.700,00	7.775,25
03 - CORDILLERA	2.912,38	3.700,00	787,62
04 - GUAIRA	219,88	300,00	80,13
06 - CAAZAPA	13.806,00	16.100,00	2.294,00
07 - ITAPUA	39.304,00	42.200,00	2.896,00
08 - MISIONES	60.641,00	69.800,00	9.159,00
09 - PARAGUARI	10.516,00	6.800,00	(3.716,00)
11 - CENTRAL	1.863,00	1.900,00	37,00
12 - ÑEENBUCU	128	2.100,00	1.972,00
Totales	131.315	152.600,00	21.285,00



SOJA ZAFRA	Superficies en hectáreas		
	Departamentos	2012/2013	2013/2014
CONCEPCION	16.674,13	16.682,25	8,13
SAN PEDRO	263.331,19	263.735,88	404,69
GUAIRA	14.766,75	14.804,56	37,81
CAAGUAZU	402.336,38	404.166,75	1.830,38
CAAZAPA	176.722,56	186.528,13	9.805,56
ITAPUA	595.185,88	643.470,44	48.284,56
MISIONES	45.395,63	45.967,06	571,44
ALTO PARANA	881.853,31	918.281,94	36.428,63
AMAMBAY	159.657,13	159.032,00	(625,13)
CANINDEYU	601.676,75	602.313,13	636,38
Totales	3.157.599,69	3.254.982,13	97.382,44

