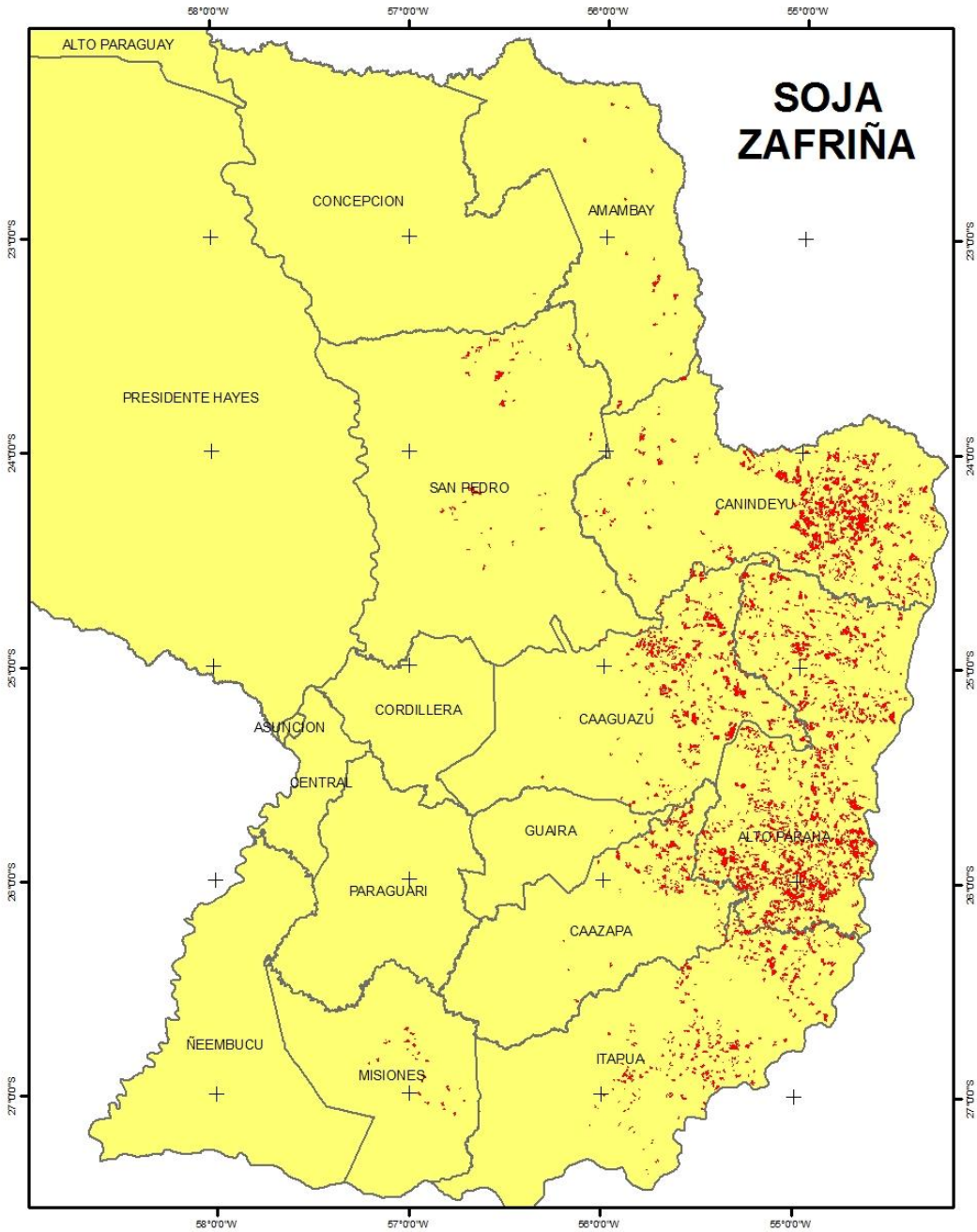
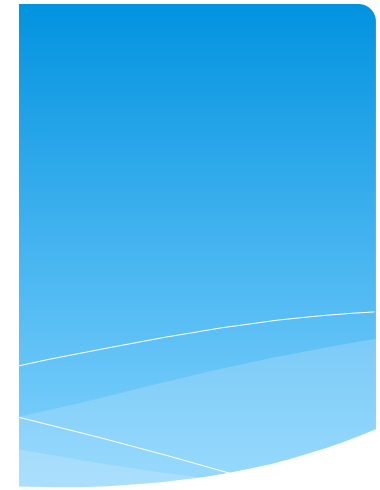
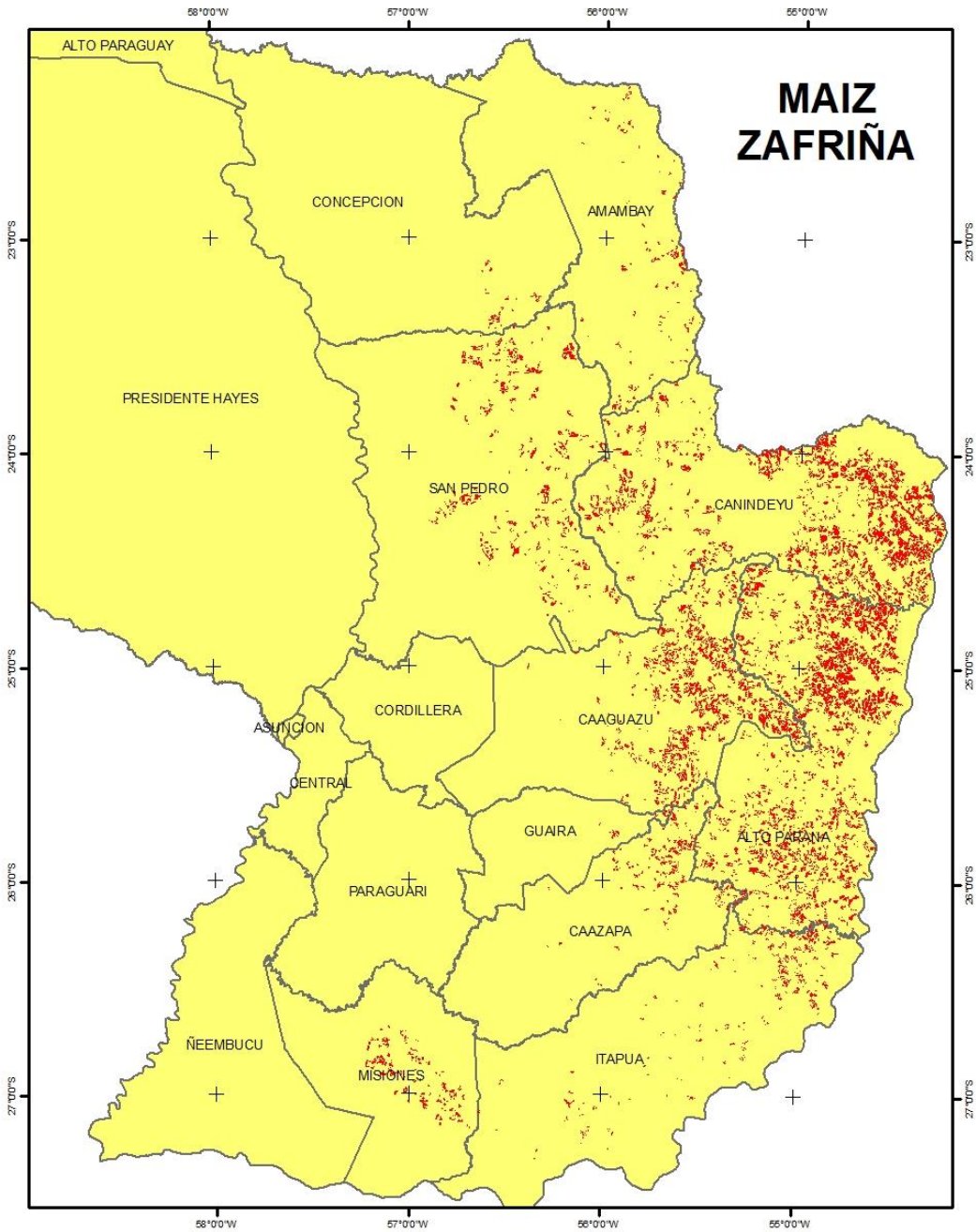


SOJA ZAFRIÑA	Superficies en hectáreas		Diferencia
	2013	2014	
01 CONCEPCION	203,56	73,00	(130,56)
02 SAN PEDRO	2.459,35	10.599,00	8.139,65
04 GUAIRA	989,22	365,00	(624,22)
05 CAAGUAZU	34.381,84	62.655,00	28.273,16
06 CAAZAPA	13.559,39	23.008,00	9.448,61
07 ITAPUA	54.427,62	50.490,00	(3.937,62)
08 MISIONES	-	4.250,00	4.250,00
10 ALTO PARANA	115.508,51	201.748,00	86.239,49
13 AMAMBAY	-	4.472,00	4.472,00
14 CANINDEYU	52.572,84	112.641,00	60.068,16
Totales	274.102,33	470.301,00	196.198,67



MAIZ ZAFRIÑA	Superficies en hectáreas		Diferencia
	2013	2014	
01 CONCEPCION	5.972,77	3.365,00	(2.607,77)
02 SAN PEDRO	91.532,39	51.923,00	(39.609,39)
04 GUAIRA	638,32	1.861,00	1.222,68
05 CAAGUAZU	135.532,63	105.010,00	(30.522,63)
06 CAAZAPA	21.661,34	20.988,00	(673,34)
07 ITAPUA	63.454,46	26.313,00	(37.141,46)
08 MISIONES	10.241,40	16.894,00	6.652,60
10 ALTO PARANA	350.919,24	223.070,00	(127.849,24)
13 AMAMBAY	41.438,94	13.943,00	(27.495,94)
14 CANINDEYU	262.507,10	186.366,00	(76.141,10)
Totales	983.898,60	649.733,00	(334.165,60)



CHIA

Superficies en hectáreas

2014

02 - SAN PEDRO



17.307,00

05 - CAAGUAZU



4.791,00

06 - CAAZAPA



1.870,00

07 - ITAPUA



9.299,00

10 - ALTO PARANA



18.589,00

14 - CANINDEYU



19.466,00

Totales



71.322,00

